



MONTHLY MEMBERSHIP PROGRESS REPORT

District 318 B

Results as of: 05/31/2019

GMT: N S SANKAR

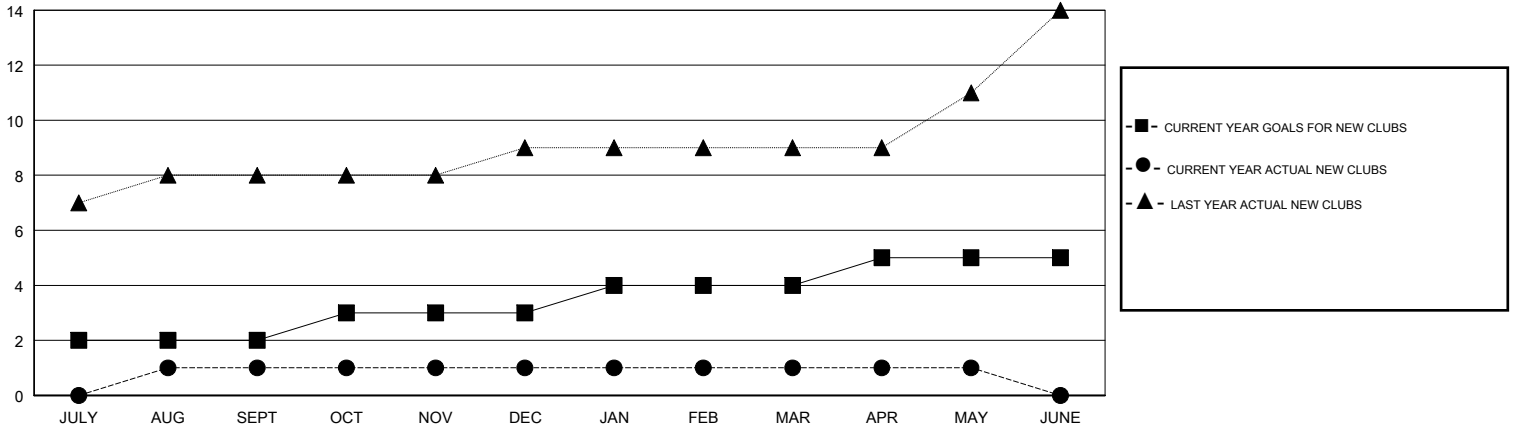
LOCATION INDIA

GMT CA

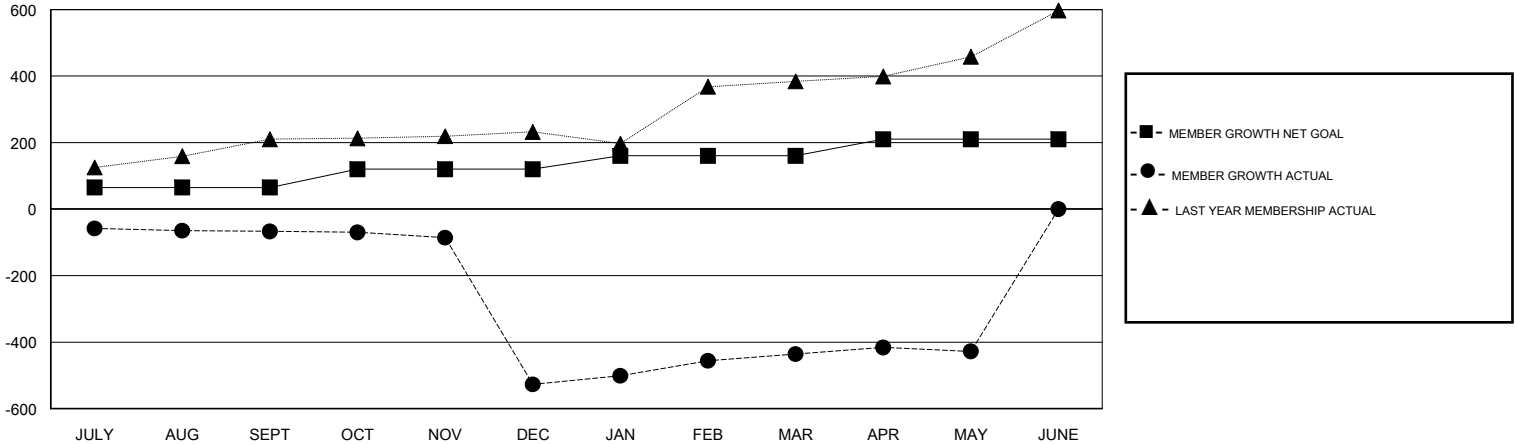
Clubs			
RESULTS FOR 2018-2019			
QUARTER	NEW CLUB GOAL	NEW CLUBS	DROPPED CLUBS
JULY/AUG/SEPT	2	1	2
OCT/NOV/DEC	1	0	11
JAN/FEB/MAR	1	0	0
APR/MAY/JUNE	1	0	0

Members			
RESULTS FOR 2018-2019			
QUARTER	MEMBER GROWTH NET GOAL	MEMBER GROWTH ACTUAL	DROPPED MEMBERS ACTUAL (including transfers)
JULY/AUG/SEPT	65	54	117
OCT/NOV/DEC	55	31	488
JAN/FEB/MAR	40	294	52
APR/MAY/JUNE	50	50	40

GOALS AND ACTUAL NEW CLUBS CUMULATIVE



GOALS AND ACTUAL MEMBERS CUMULATIVE



DROPPED CLUBS: 13	57 CLUBS OF 121 ADDED 1 OR MORE NEW MEMBERS	<u>GENDER DISTRIBUTION</u>		
		MALE	3,335 (85.38%)	
<u>DROPPED MEMBERS</u>		FEMALE	571 (14.62%)	
		Women Percentage Fiscal Year Goal: 30%		
DECEASED	15	TOTAL FAMILY UNIT MEMBERS		1,083
CLUB CANCELLED	379	FAMILY MEMBERS PAYING HALF DUES		564
OTHER	303			
TOTAL	697			

[CLICK HERE FOR CUMULATIVE MEMBERSHIP DATA](#)